

**Basic Acupuncture Research has met
the Gold Standard Of Science**

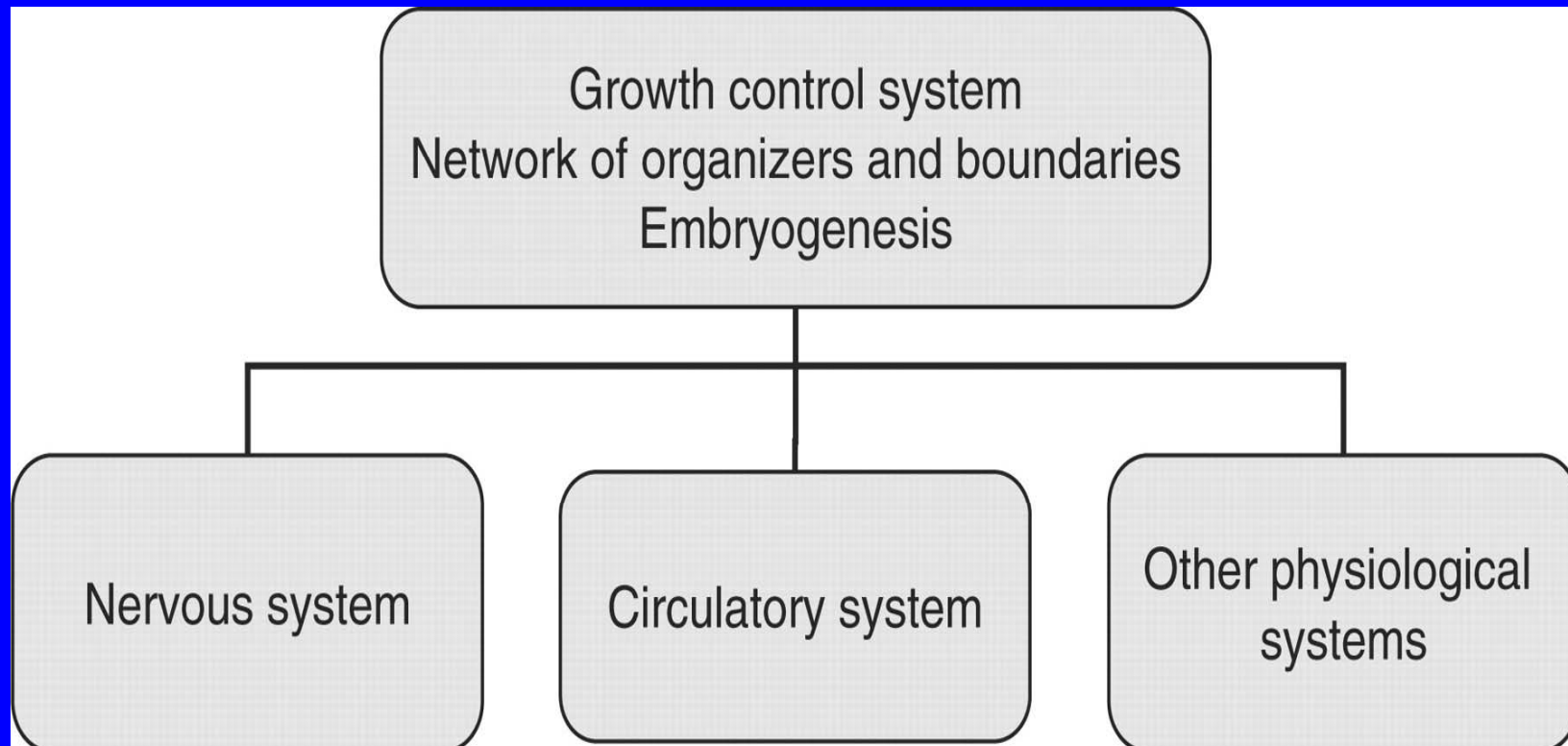
Charles Shang, MD

Department of Medicine

Harvard Medical School

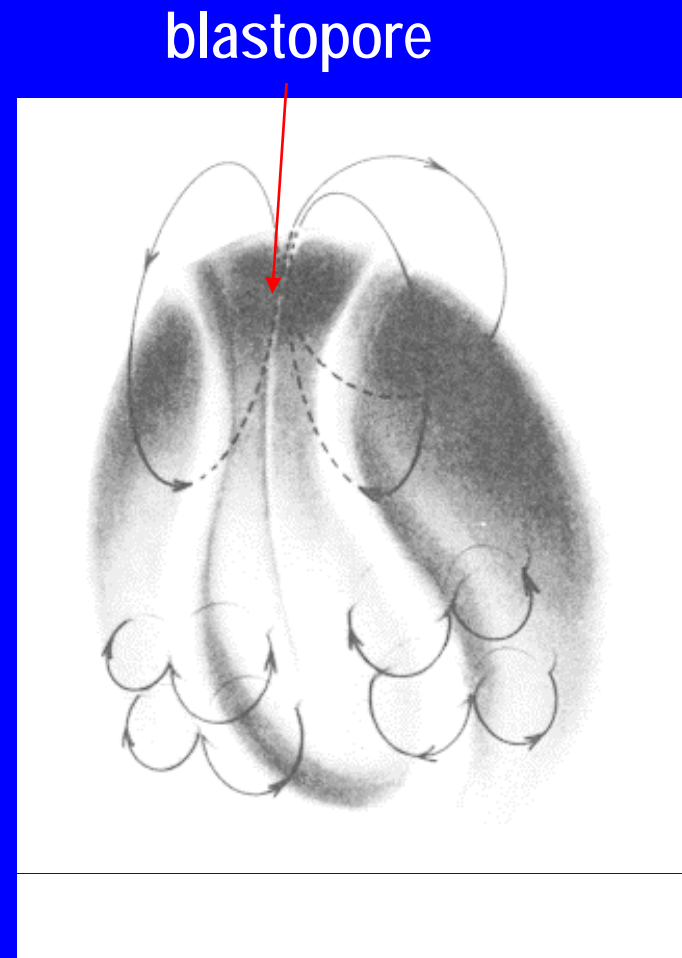
cshang@caregroup.harvard.edu

All the physiological systems are developed through a growth control system



The growth control system - a network of organizers

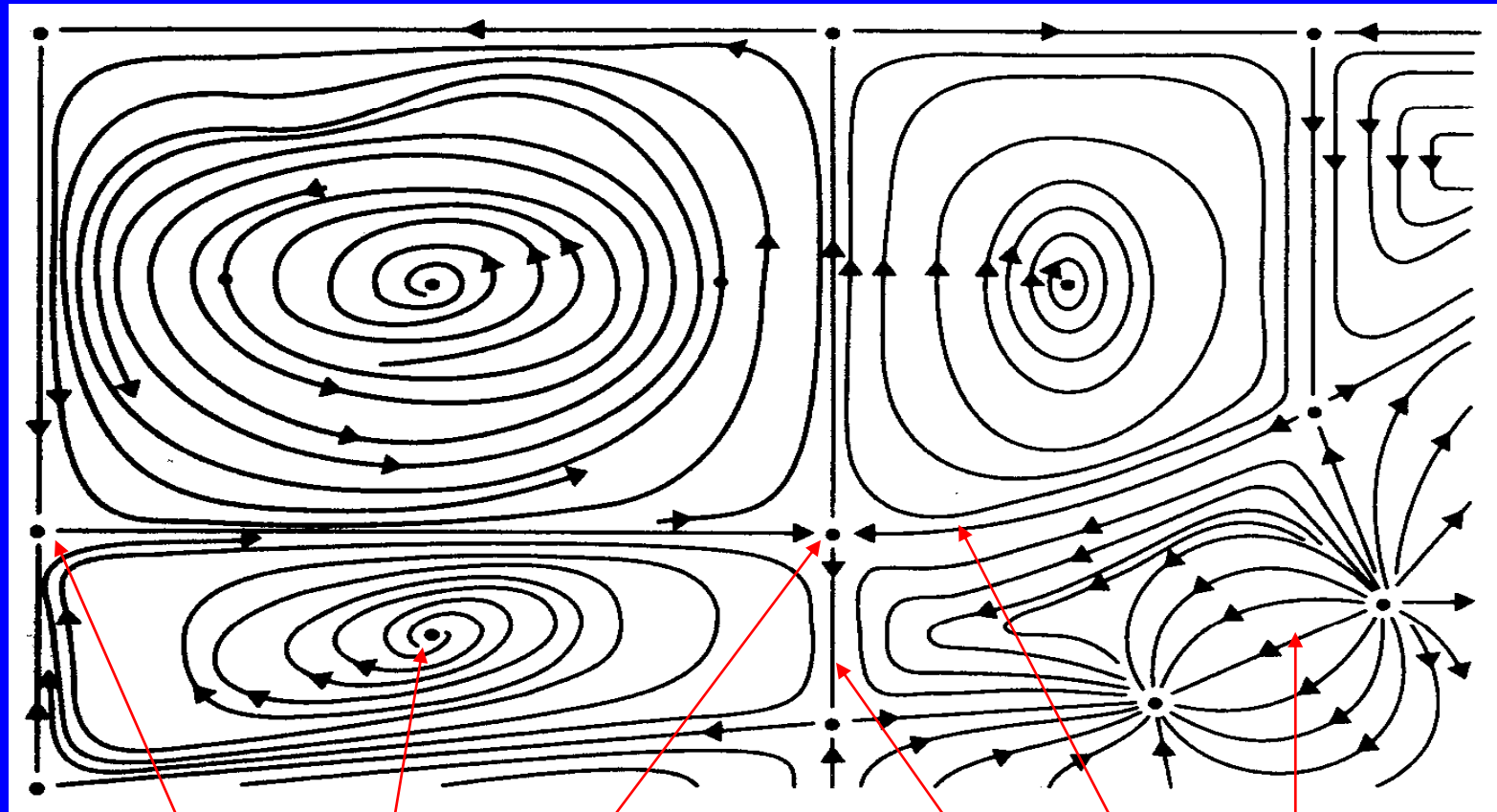
- ◆ An organizer is a small group of cells which control the growth of a much larger region.
- ◆ The blastopore, a classic organizer, has high electric conductance and current density.
- ◆ A steady blastopore current is still present after early embryogenesis.
- ◆ The bioelectric fields serve as cues for growth control.
- ◆ These results confirmed the predictions from acupuncture research. (Shang. *Am J Chin Med* 1989;17:119-127.)



Ionic currents traversing an embryo

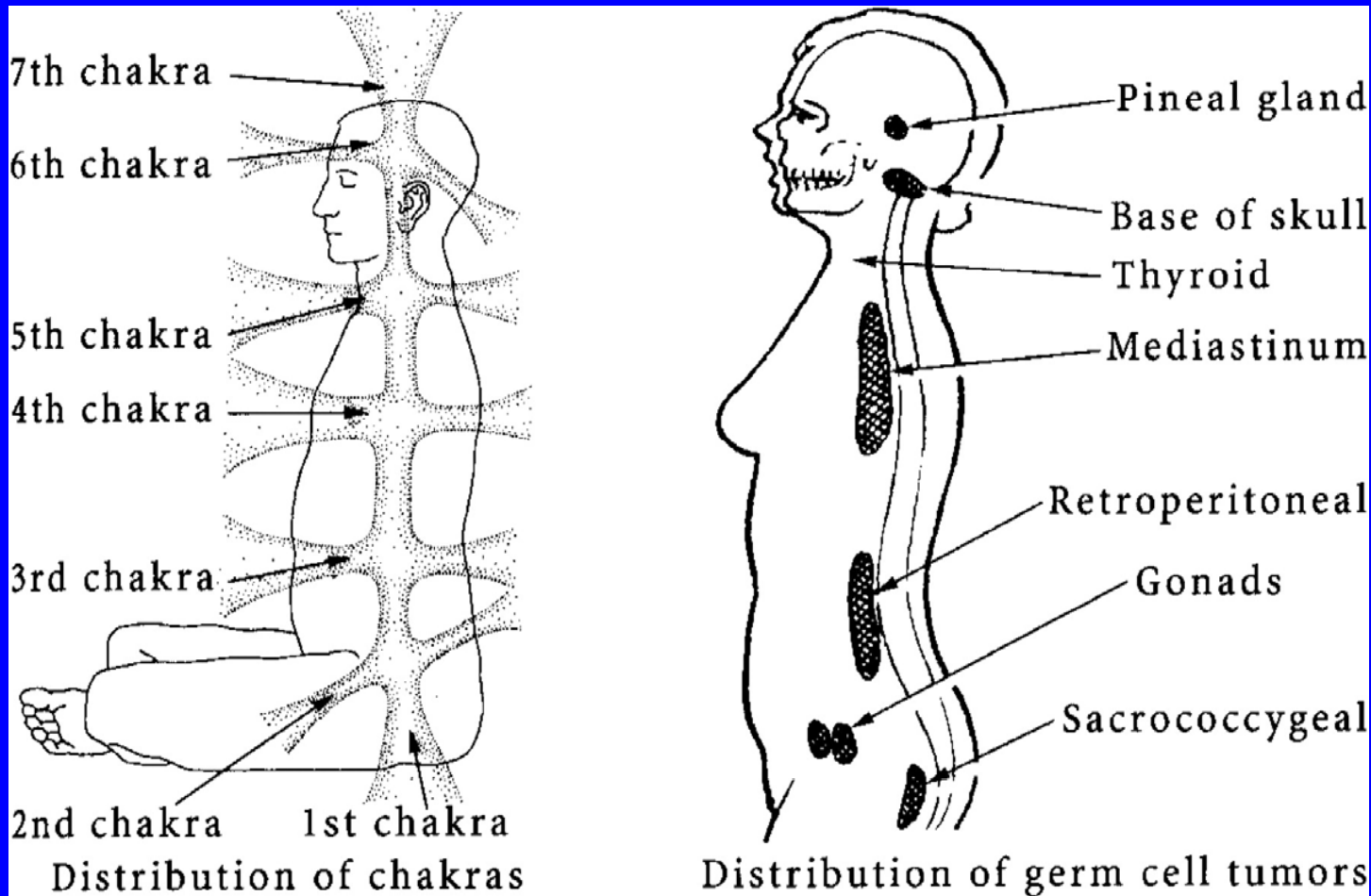
Shi & Borgens. *Dev Dynamics* 1996;202:102.

Illustration of singular points and separatrices



singular points

separatrices

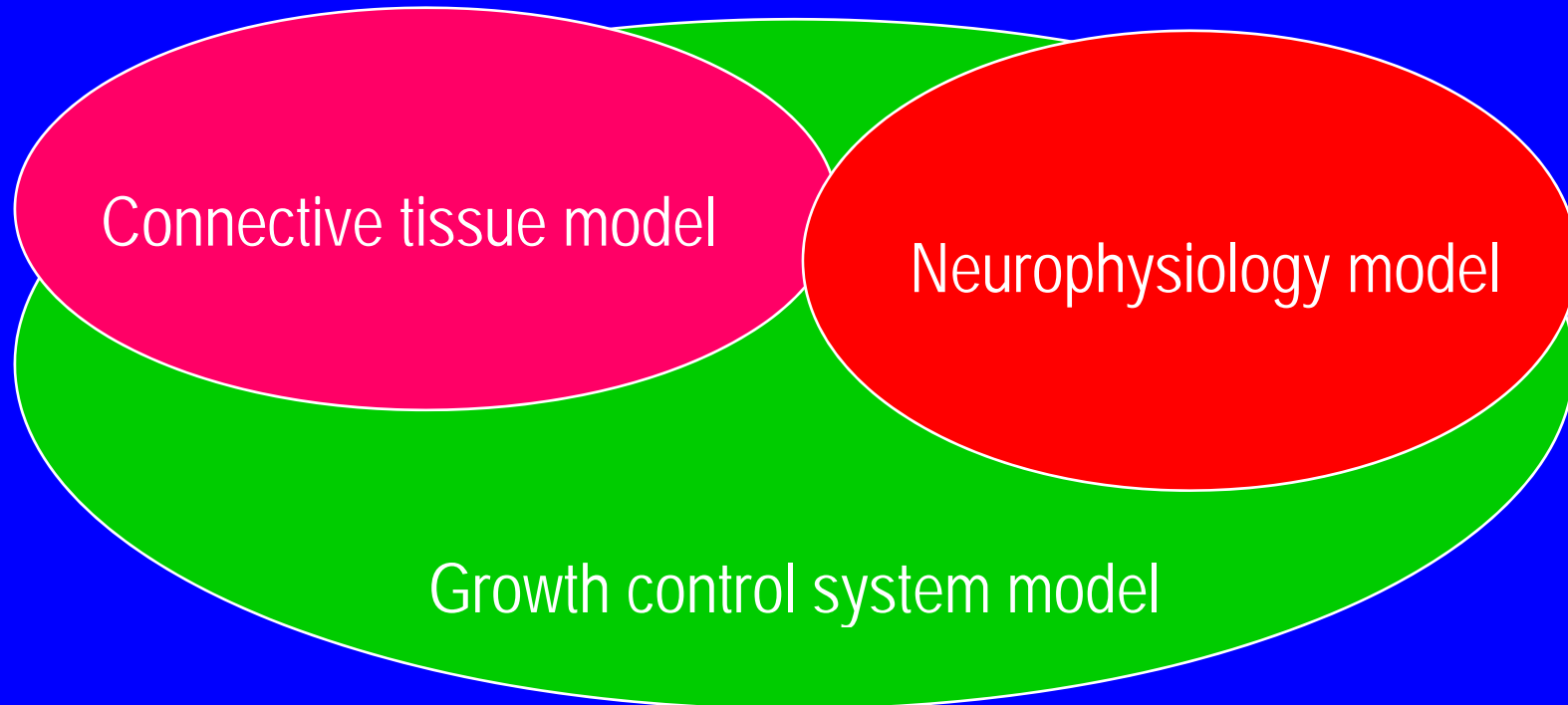


The distribution of germ cell tumors correlates with normal germ cells in human body which are likely to be part of the inner growth control system. This distribution also correlates well with the chakra system.

Figure modified from: Govan ADT, MacFarlane PS, Callander R et al (1995) Pathology illustrated, 4th edn, Churchill Livingstone, London, p150 and form: Stux (1997) Basics of acupuncture, 4th edn. Springer Berlin p287 Courtesy of Churchill Livingstone and Dr. Gabriel Stux.

The convergence of biological models

- ◆ A growth control model encompassing the neurophysiology of acupuncture can explain and predict many facts beyond neurophysiology.
- ◆ The growth control model is supported by the research on connective tissue.



Summary

- ◆ Basic acupuncture research has met the gold standard of science:
- ◆ The growth control system model of acupuncture has correctly predicted multiple results in both acupuncture and conventional biomedical research – setting the first example of a biological model in integrative medicine with extensive prediction power.
- ◆ The growth control model of acupuncture has shed light on origin, distribution and physiological functions of chakra and meridian systems, as well as the puzzling results of acupuncture clinical trials.