

A M I

Ki Energy Research

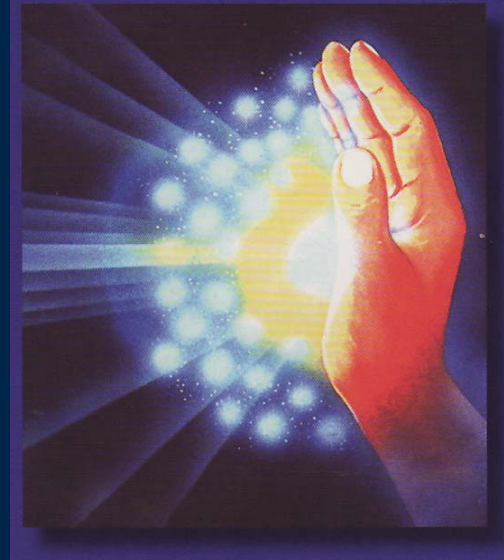
California Institute for Human Science

March 24, 2009



2.1 Standard AMI Experiment

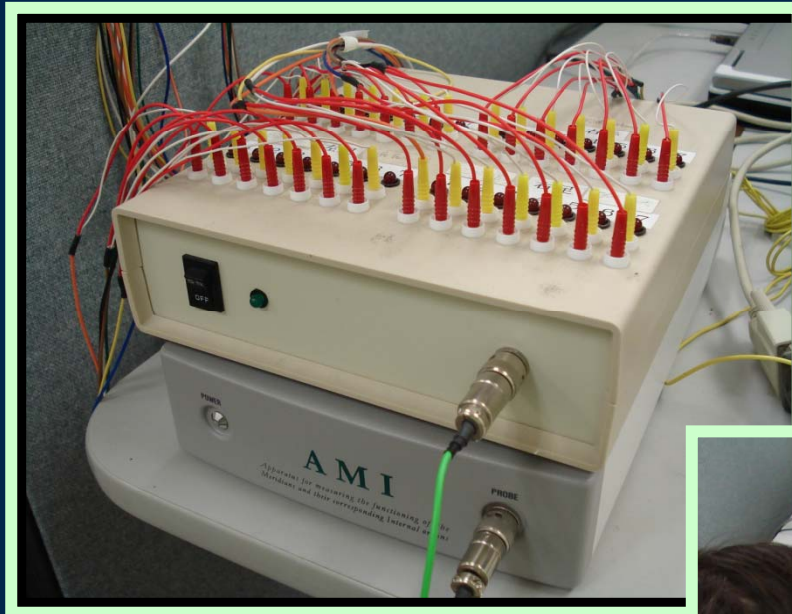
➤ Pranic Healing



Pranic Healing is a non-touch energy healing technique that utilizes “prana” and is applied on the bio-electromagnetic field to balance, harmonize and transform body’s energy processes.

Prana (Sanskrit word) :
life-force, “Chi,” “Ki”

2.2 Continuous AMI Experiment

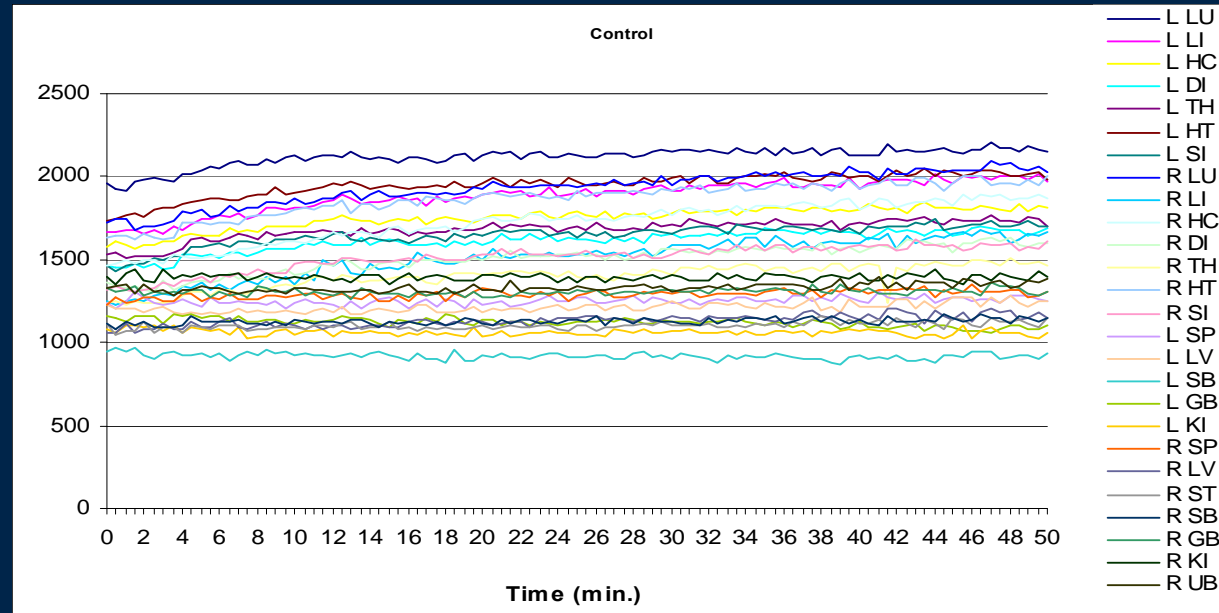


AMI Continuous Measurement



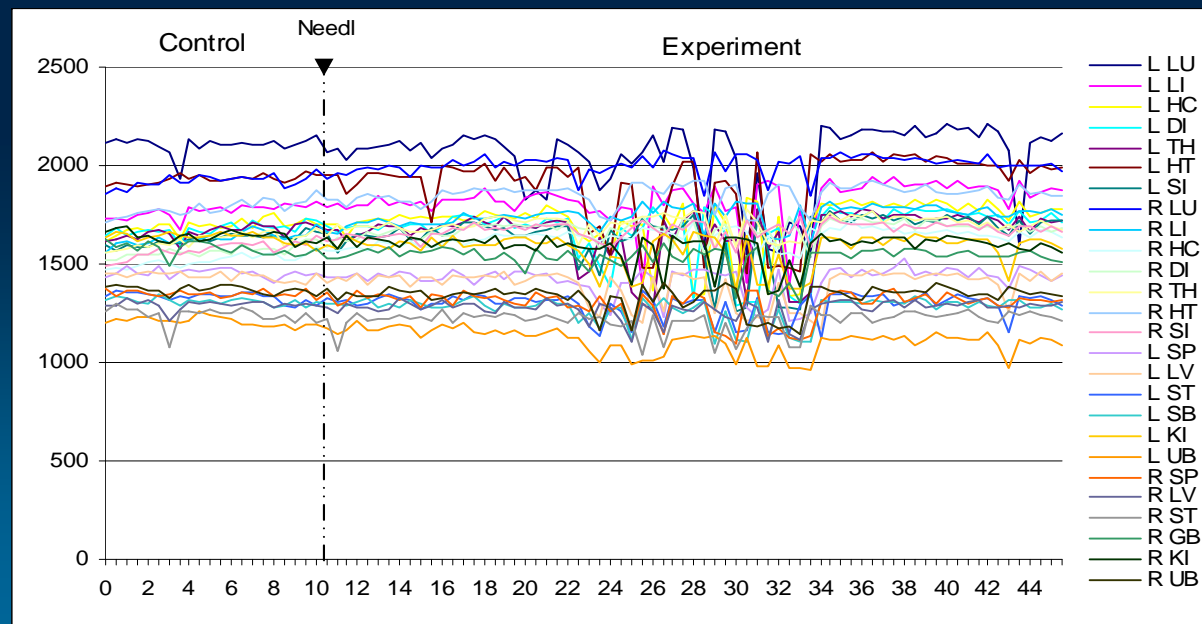
Needle Effect Experiment

Control



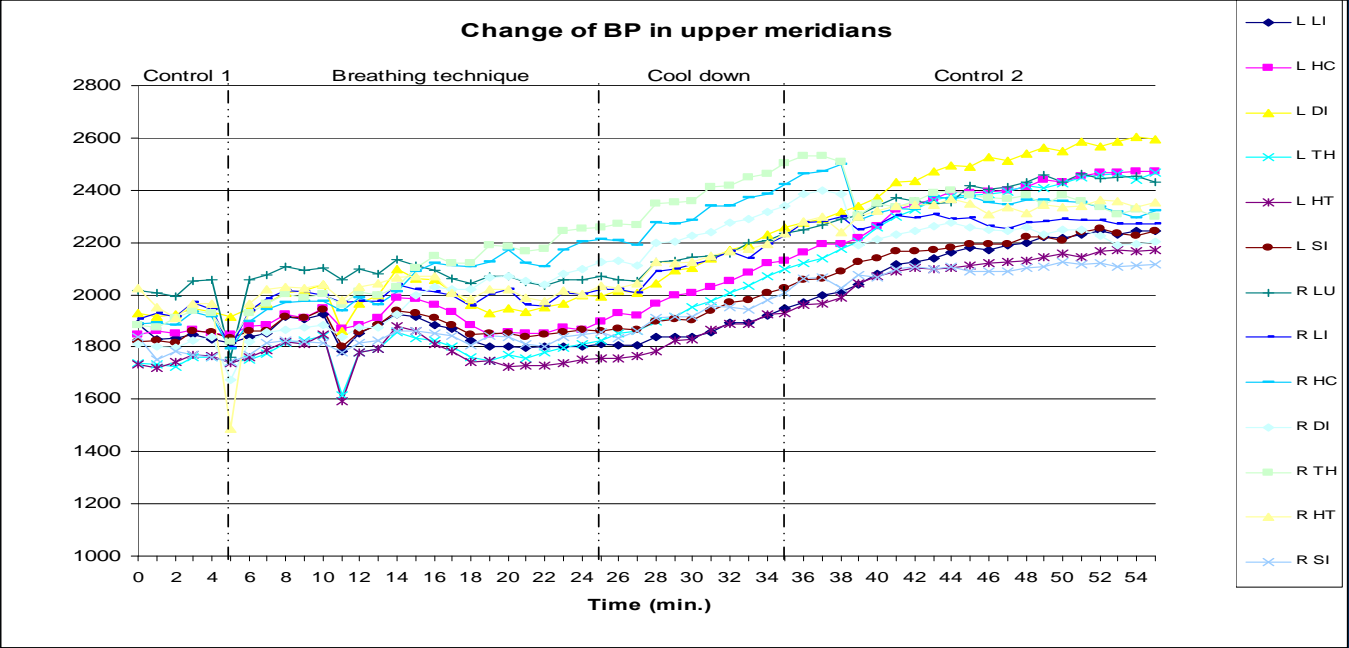
2/11/09

Associate Point of HC



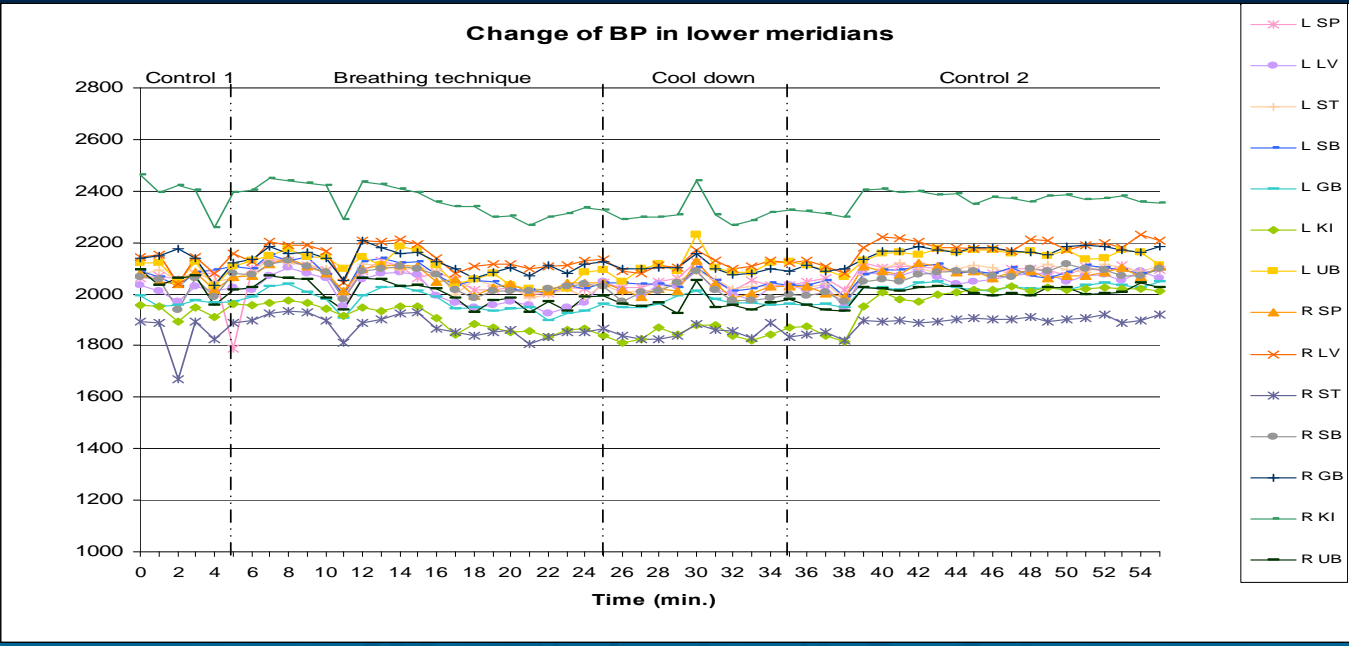
2/18/09

Upper Body



9/5/08

Lower Body



9/5/08